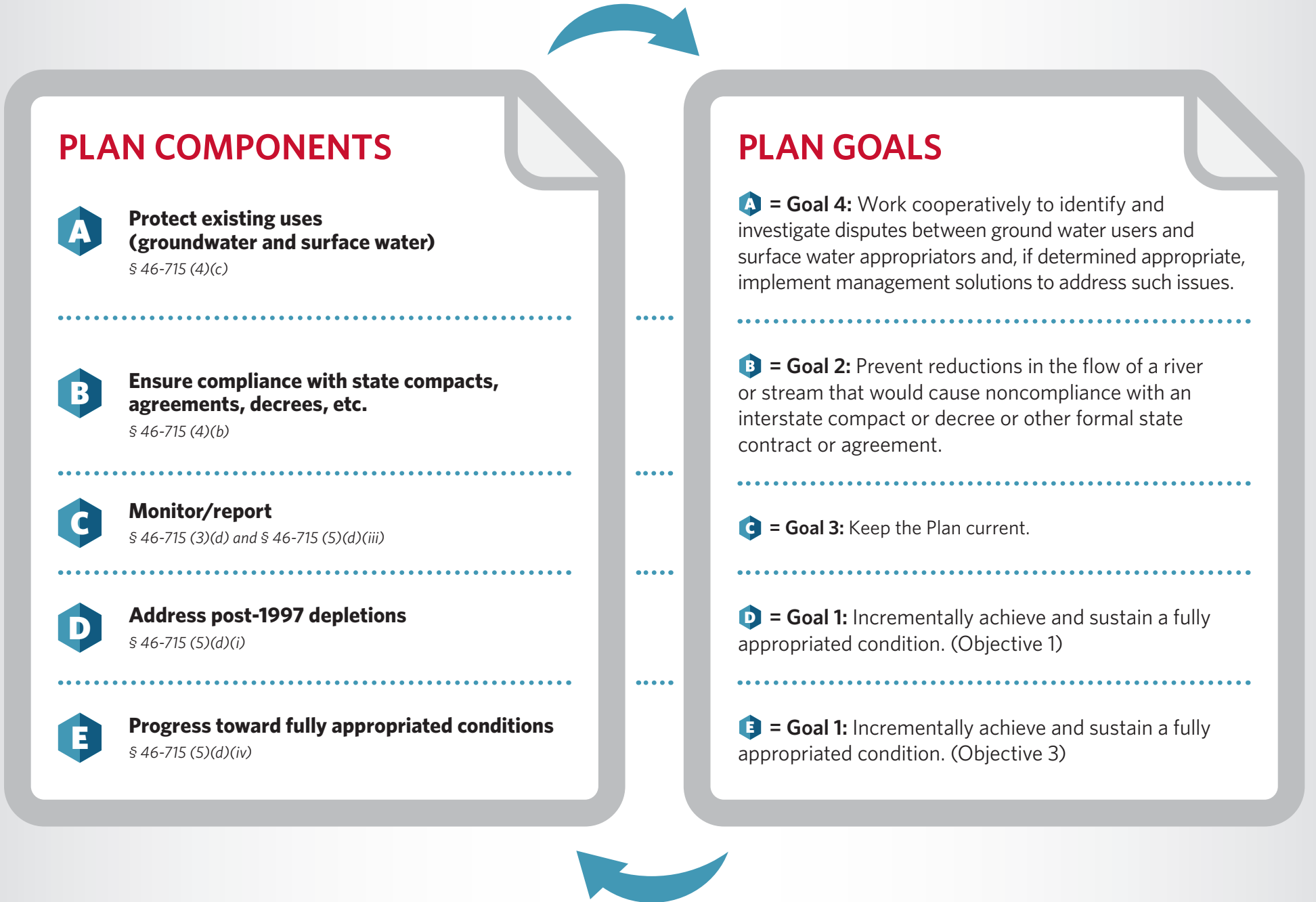


UPPER PLATTE BASIN

Second Increment Roadmap

1 FIRST INCREMENT

The first Upper Platte basin-wide plan was adopted in 2009. The plan currently includes components and goals that complement each other.



2 SECOND INCREMENT

First increment efforts also worked to establish the overall difference between current and fully appropriated levels of development. The Single Planning Group (SPG) will help define the progress towards fully appropriated conditions to be made during the second increment.

A B C D PLAN COMPONENTS INCLUDED

A, B, C, and D will be carried forward and still need to be met in the second increment of the plan.



CURRENT

Addresses post 1997 ground water depletions and protects existing users from new depletions.

E PROGRESS TOWARD FULLY APPROPRIATED CONDITIONS

Interpretation of § 46-715 defines additional consideration to be weighted by the SPG to determine additional progress goals towards a fully appropriated condition during the second increment.

FULLY APPROPRIATED

Meets § 46-713 requirements for each individual user regardless of cost or level of regulation

Key statute references on the back

Key Statute References to Fully Appropriated Conditions

§ 46-706 (27)

Overall difference between the current and fully appropriated levels of development means the extent to which existing uses of hydrologically connected surface water and ground water and conservation activities result in the water supply available for purposes identified in subsection (3) of section 46-713 to be less than the water supply available if the river basin, subbasin, or reach had been determined to be fully appropriated in accordance with section 46-714.

§ 46-713 (3)

A river basin, subbasin, or reach shall be deemed **fully appropriated if the department determines** based upon its evaluation conducted pursuant to subsection (1) of this section and information presented at the hearing pursuant to subsection (4) of section 46-714 **that then-current uses of hydrologically connected surface water and ground water in the river basin, subbasin, or reach cause or will in the reasonably foreseeable future cause:**

- a. the **surface water supply to be insufficient** to sustain over the long term the beneficial or useful purposes for which existing natural-flow or storage appropriations were granted and the beneficial or useful purposes for which, at the time of approval, any existing instream appropriation was granted,
- b. the **streamflow to be insufficient** to sustain over the long term the beneficial uses from wells constructed in aquifers dependent on recharge from the river or stream involved, or
- c. **reduction in the flow of a river or stream sufficient to cause noncompliance** by Nebraska with an interstate compact or decree, other formal state contract or agreement, or applicable state or federal laws.

§ 46-715 (2)

In developing an integrated management plan, the **effects of existing and potential new water uses on existing surface water appropriators and ground water users** shall be considered. An integrated management plan shall include the following:

- a. Clear goals and objectives with a purpose of **sustaining a balance between water uses and water supplies so that the economic viability, social and environmental health, safety, and welfare** of the river basin, subbasin, or reach can be achieved and maintained for both the near term and the long term.